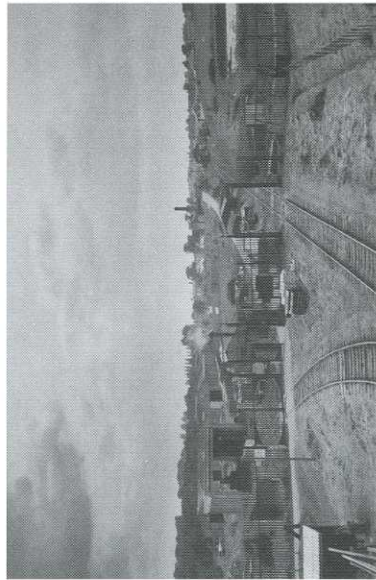


## Heritage

- The site has been shaped and defined by over 130 years of military activity.
- Due to the consolidation of military facilities the RSME who currently occupy the site, will relocate to Bicester in 2012 and this largely brownfield site will become surplus to MoD requirements.



**EAST GATE LODGE HILL**



**LODGE HILL MAGAZINE**



**LODGE HILL MAGAZINE**

## Where do we go from here?

- Land Securities is committed to community engagement and we want to work with you to help us shape a new masterplan for Lodge Hill.
- Please take the opportunity to get involved and complete a feedback form to give us your views.
- Please visit the website [www.lodgehill.info](http://www.lodgehill.info)
- Register to participate in workshops on specific topics, either on the website or on 0845 683 2544.

### What happens next?

**June/July**  
Workshops.

**October/November**

A display to show how we have listened and to see the emerging masterplan, which will be used to inform Medway's Core Strategy.

## Contact us

**Telephone: 0845 683 2544**

**[www.lodgehill.info](http://www.lodgehill.info)**

